
FP3019TSZ

FP3019Z

Flat-Panel Display for Honeywell Ergonomic Furniture

*A low-maintenance, long-life upgrade
for your Z stations*

A high quality replacement display

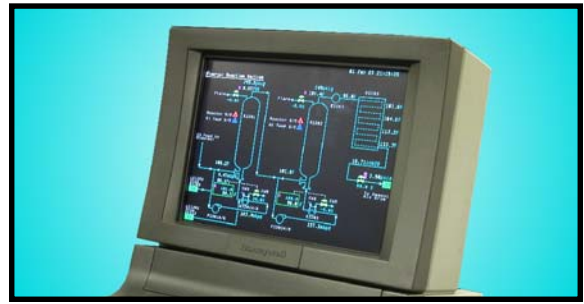
This LCD flat-panel display was designed as a direct replacement for the CRT-based monitors used in Honeywell's ergonomic furniture using EPDG, EPDG2, or GUS video. The display is installed without modifications to the furniture for a fast and simple monitor replacement. Connect the power cable, video cable, touch screen cable, and brightness/contrast cable to matching connectors on the FP3019TSZ. Monitor touchscreen is not compatible with Windows NT.

Integrated flat touch screen

The FP3019TSZ includes a flat infrared touch screen mounted to the front of the display. This touch screen is mounted a few millimeters from the display surface, and eliminates "false picks" sometimes seen with the old touch screen. FP3019Z is without touchscreen.

Bright image, durable screen

The LCD plastic surface is protected by a layer of anti-glare glass attached to the front of the display. This durable surface protects the LCD from the wear scratches that any plastic surface eventually suffers after repeated cleaning (or touching with fingers, pencils, or sharp objects). The anti-glare treatment of the glass, combined with the inherent low-glare characteristics of a flat display, results in a high-contrast display that is easy on the eyes.



Low maintenance

The solid-state design of the flat-panel LED Backlit display provides inherent reliability, low power consumption, and low maintenance. This LCD technology is expected to last twice as long as CRT-based monitors. Setup adjustments are accomplished using a push-button mounted behind the "Honeywell" door at the bottom of the monitor. Once initial adjustments have been made, the control feature may be disconnected, preventing unauthorized adjustments to the display.

Specifications

Viewable Area: 19" diagonal (14.81" x 11.85")

Viewing Angle: 170° horizontal, 170° vertical

Power Consumption: 30 watts, 110VAC/240VAC

Display modes supported: EPDG, VESA DDBC2B and a subset of VESA DPMS up to 1280 x 1024. 15-pin connector, 9-pin adapter included.

Brightness: 300cd/m²

Operating Environment: Temperature 0-50°C,
Relative Humidity < 90% at <40°C

Weight: 8.6 kg (17.6 lbs)



WESTERN PROCESS COMPUTERS, INC.
2033 W. NORTH LANE, SUITE 14
PHOENIX, AZ 85021

Phone: 602-997-7245
Fax: 602-997-7248
info@westernprocess.com
www.westernprocess.com